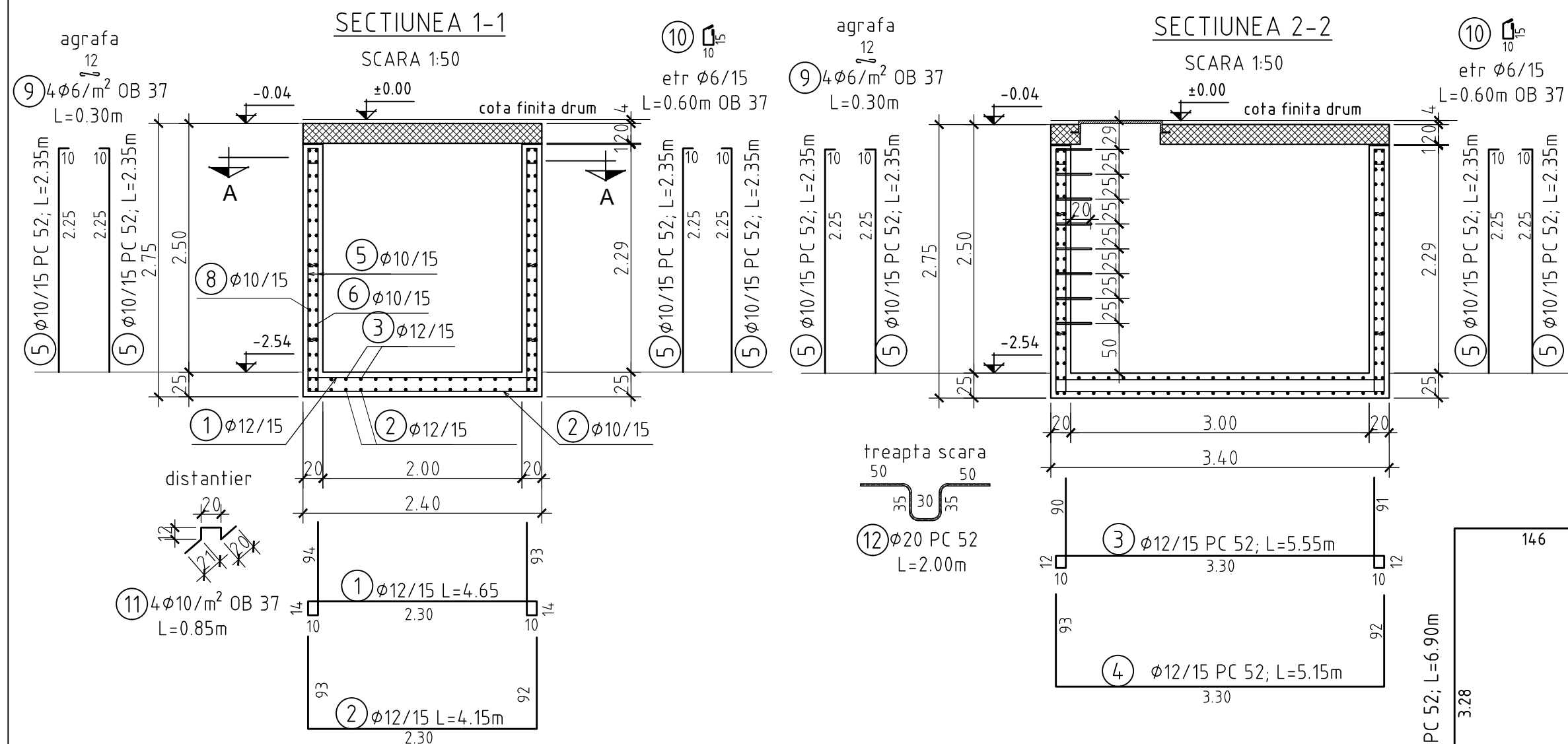
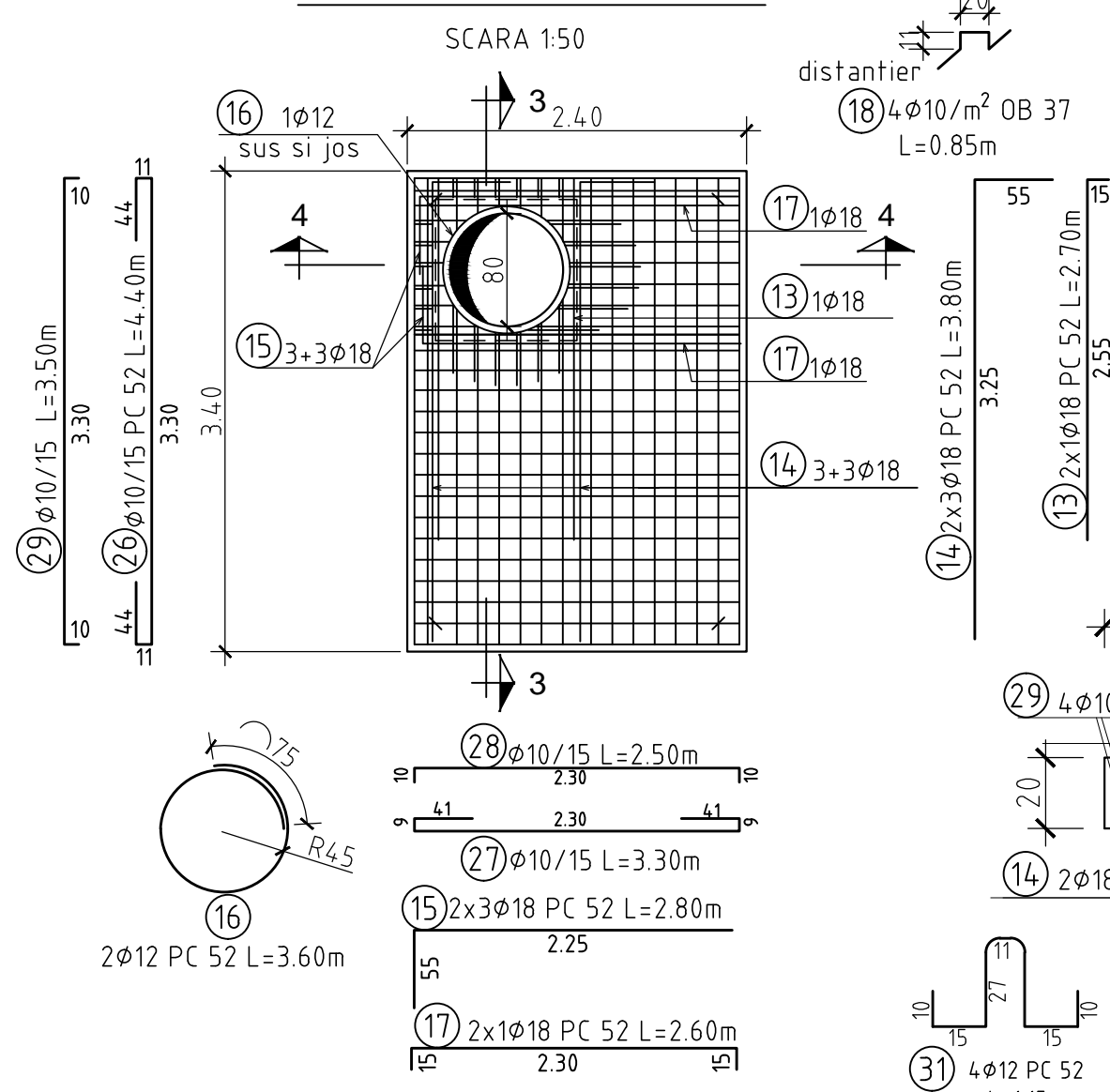


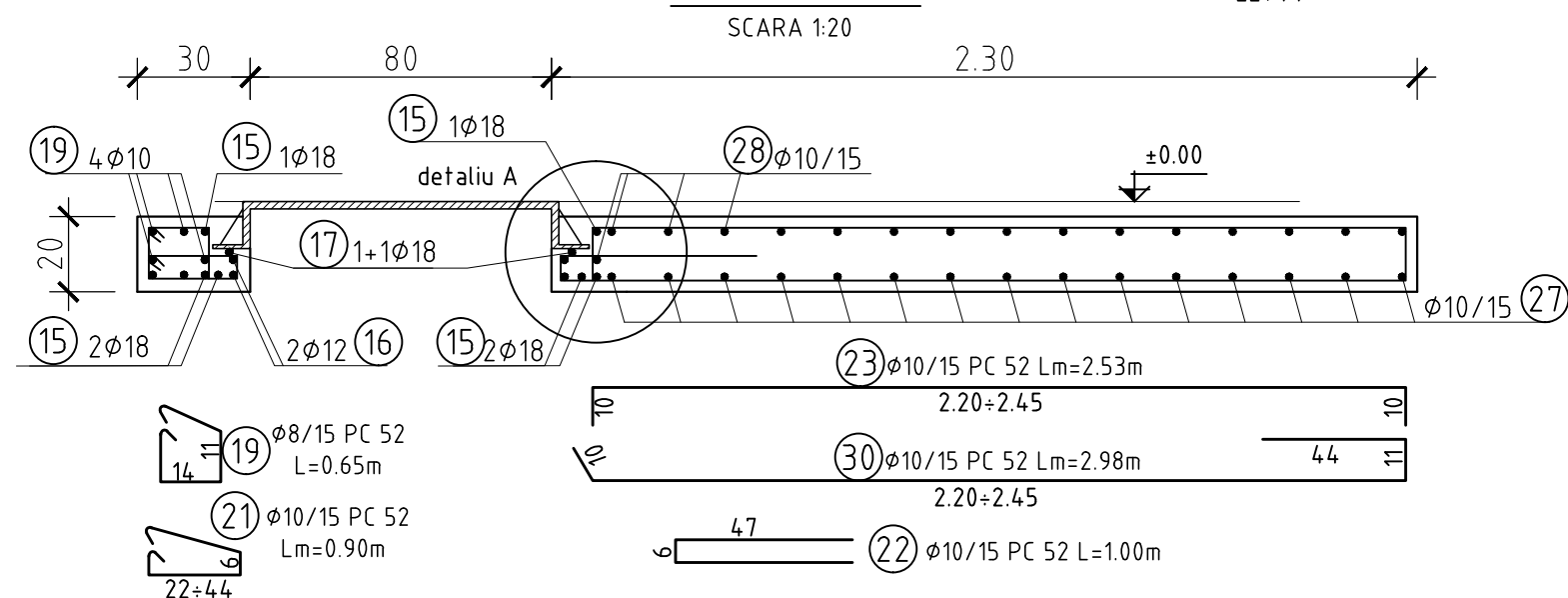
PLAN ARMARE CAMIN TIP 22



ARMARE PLACA PREFABRICATA



Secțiunea 3-3



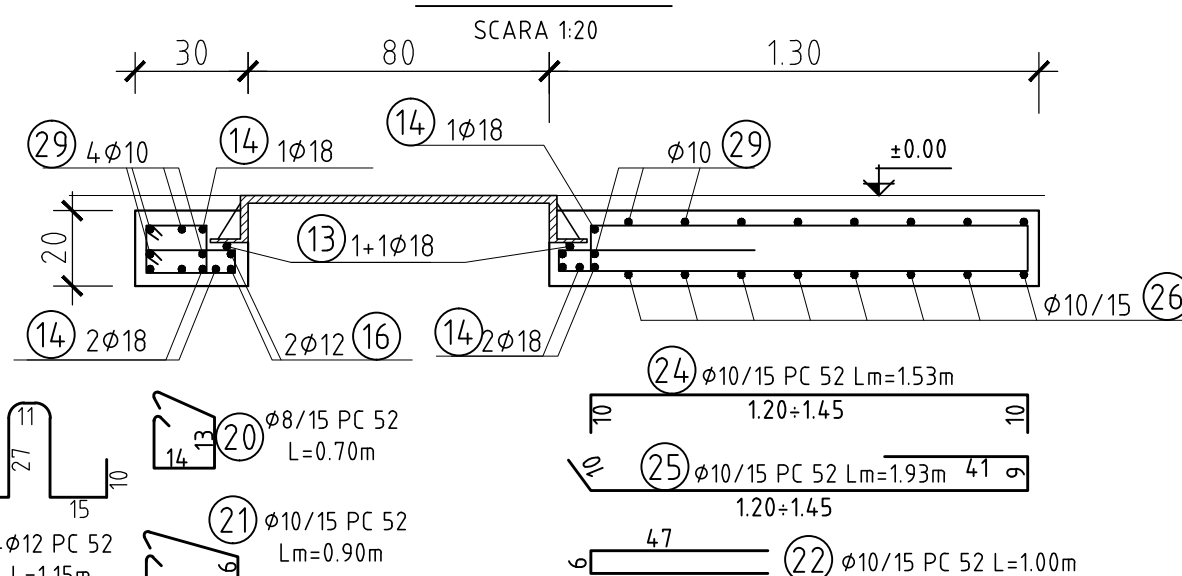
NOTA:

- Acoperirea nominala cu beton a armaturilor este:

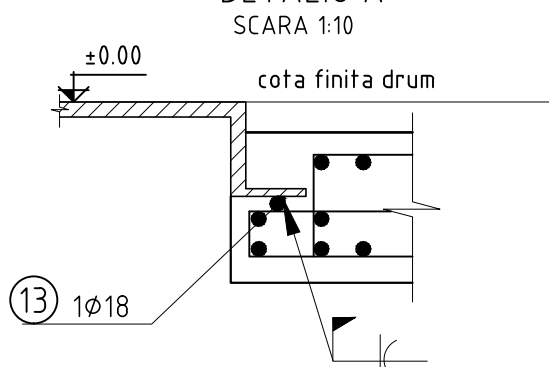
- | | |
|-----------------|------|
| -radier | 45mm |
| -pereti | 40mm |
| -placa interior | 20mm |
| exterior | 30mm |

- Zona superioara a caminului se va betona pana la cota 0.00(cota finita drum), daca partea carosabila nu este din asfalt.
- Prezentia planşa se va citi împreună cu planşele de instalatii hidraulice.
- Capacul va fi carosabil cu rama patrata, clasa D 400.
- Dimensiunile parţiale ale armaturilor sunt cotate la interior.

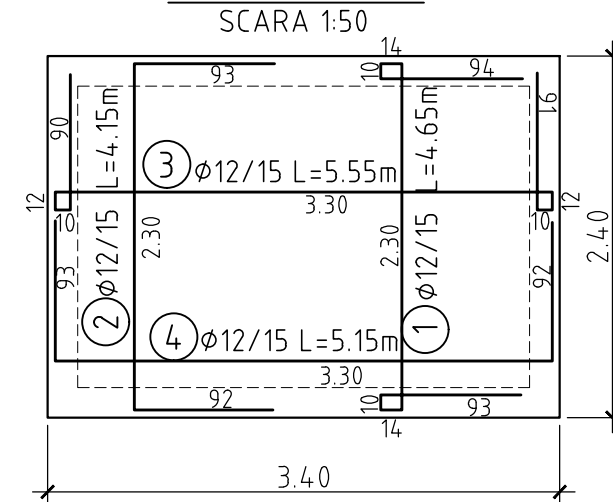
Secțiunea 4-4



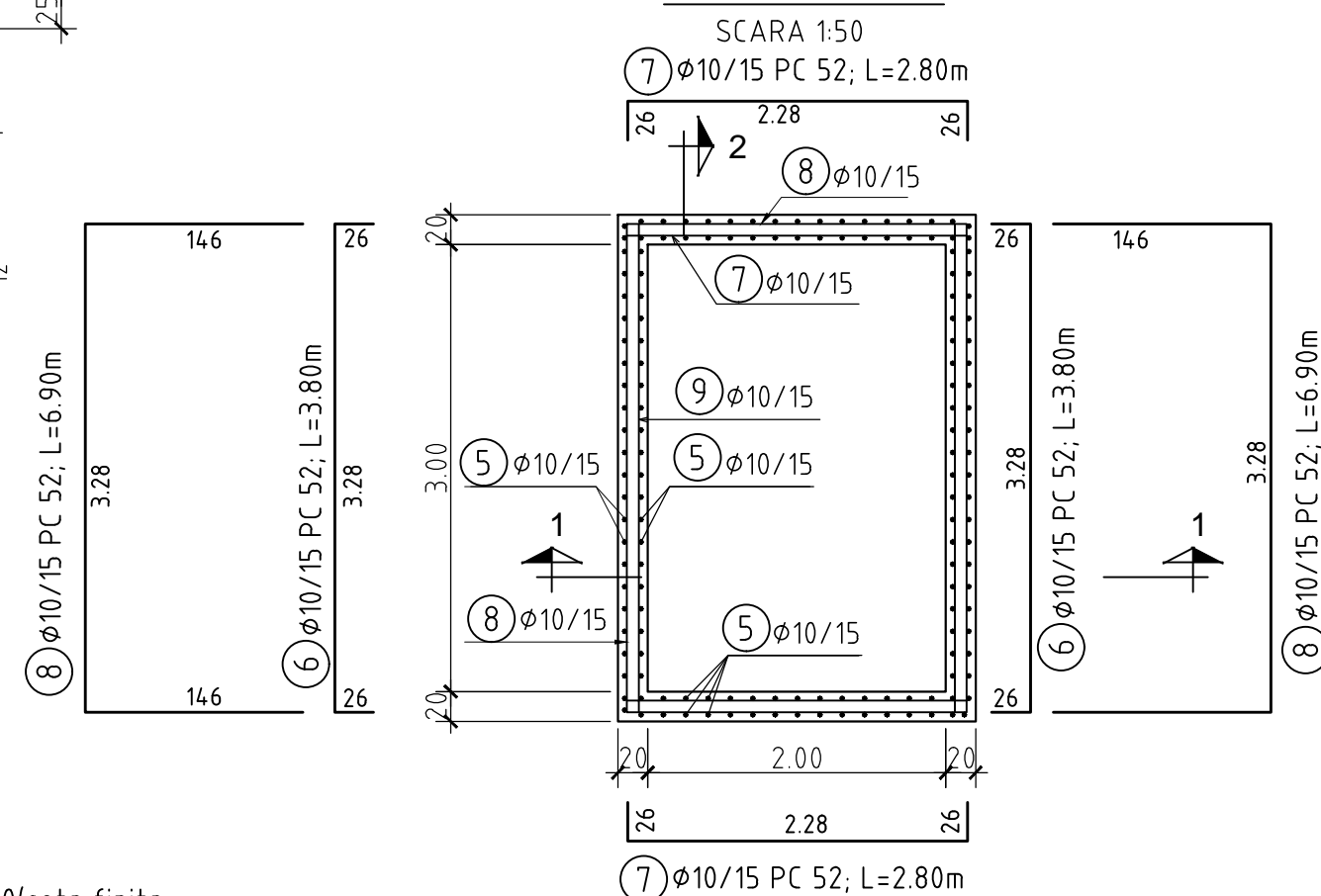
DETALIU A



ARMARE RADIER



SECTIUNEA A-A



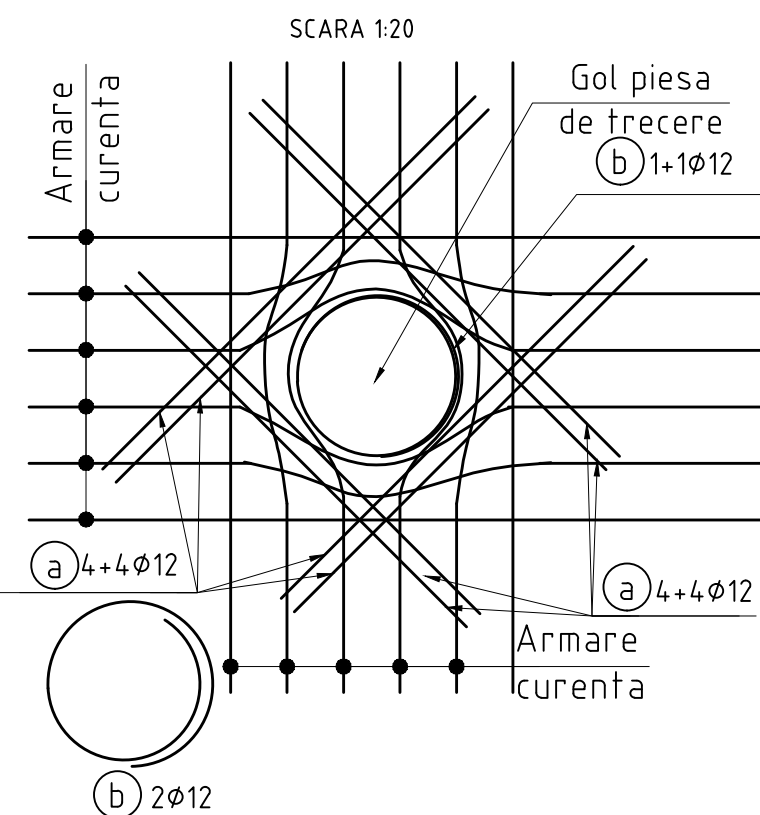
Extras de armatura

Marca	ø	Buc	Lungime	OB 37		PC52				
				ø 6	ø 10	ø 8	ø 10	ø 12	ø 18	ø 20
1	12	24	4.65					111.60		
2	12	24	4.15					99.60		
3	12	17	5.55					94.35		
4	12	17	5.15					87.55		
5	10	148	2.35				347.80			
6	10	32	3.80				121.60			
7	10	32	2.80				89.60			
8	10	32	6.90				220.80			
9	6	76	0.30	22.80						
10	6	72	0.60	43.20						
11	10	24	0.85		20.40					
12	20	8	2.00							16.00
13	18	2	2.70						5.40	
14	18	6	3.80						22.80	
15	18	6	2.80						16.80	
16	12	2	3.60					7.20		
17	18	2	2.60						5.20	
18	10	24	0.85		20.40					
19	8	7	0.65			4.55				
20	8	7	0.70			4.90				
21	10	12	Lm=0.90				10.80			
22	10	12	1.00				12.00			
23	10	6	Lm=2.53				12.18			
24	10	6	Lm=1.53				9.18			
25	10	6	Lm=1.93				11.58			
26	10	10	4.40				44.00			
27	10	17	3.30				56.10			
28	10	20	2.50				50.00			
29	10	13	3.50				45.50			
30	10	6	Lm=2.98				14.88			
31	12	4	1.15					4.60		
32	12	8	1.65					13.20		
33	12	2	1.25					2.50		
34	12	16	1.85					29.60		
35	12	2	2.00					4.00		
36	12	16	1.95					31.20		
37	12	2	2.30					4.60		
ml/ø				66.00	40.80	9.45	1046.02	490.00	50.20	16.00
kg/ml				0.222	0.617	0.395	0.617	0.888	1.998	2.460
kg/ø				14.65	25.17	3.73	645.39	435.12	100.30	39.40
TOTAL		kg/buc		40		1224				

BETON DE EGALIZARE
BETON ARMAT
OTEL BETON

C8/10,X0,Dmax 32,S3,CEM II B-M (S-LL) 32.5 R
C 25/30,XC4,XF3,CI0.2,Dmax 22,S3,P4,CEM II/A-S 32.5R
OB 37, PC 52

Detaliu armare goluri piese de trecere



Lungimea si marcele barelor a si b

DN	Bara marca a		Bara marca b	
mm				
160	32	1.65	33	1.25
400	34	1.85	35	2.00
500	36	1.95	37	2.30

Rev	Nume	Ver	Aprb	Data	Descriere

Autoritatea contractanta: **S.C.AQUACARAS S.A. CARAS SEVERIN**



Adresa: P-ta Republicii, nr. 7, Resita
Jud. Caras Severin
Tel.: +40 255 212 458
Fax.: +40 255 214 421
E-mail: office@aquacaras.ro

Proiectant

**Consortiu S.C Eptisa Romania
S.R.L. si Eptisa Servicios de Ingeniería S.L.**
Șos. Dudești-Pantelimon nr. 42, RAMS center, et. 5, corp A,
sector 3, București
Tel: + 40 21 301 14 70
Fax: + 40 21 301 14 80
www.eptisa.com

The logo for Eptisa, featuring the word "eptisa" in a stylized, lowercase font. The "e" and "p" are blue, while the "t" is orange. The "i" and "s" are blue, and the "a" is orange. The letters are bold and modern.

Project:


Proiect: MODERNIZAREA INFRASTRUCTURII DE
APA SI APA UZATA IN JUDETUL
CARAS SEVERIN - AGLOMERAREA RESITA

Plansa:

Retele apa
Camin tip 22-Plan Armare

Desenat: Ing. B. Paraschiv Data: Aprilie 2013

Verificat: Ing. M. Serbanoiu Data: Aprilie 2013

Aprobat: Ing. D. Spiridon  Data: Aprilie 2013

Plansa nr

CS-RE-PT/DA-A-R-22.2

	Revizia
--	---------

C